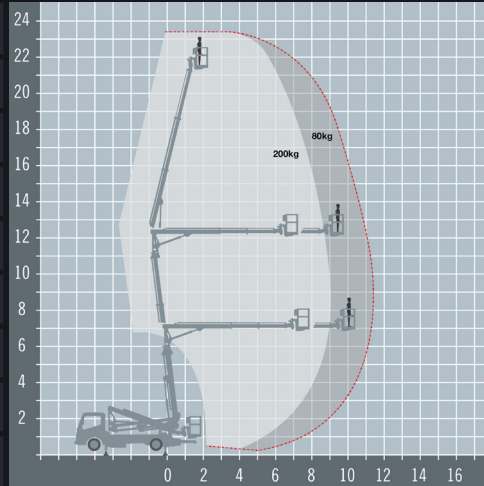


# MULTITEL MX235

ALTERNATIVES: MultiTel MJ226

## 23 metre truck mounted articulated boom

REACH HEIGHT	23.4 m
PLATFORM HEIGHT	21.4 m
UP AND OVER	10.71 m
HORIZONTAL REACH	11.5 m
STOWED HEIGHT	2.55 m
DEPLOYED WIDTH	3.4 m
PLATFORM SIZE	1.4 x 0.7 m
WEIGHT	3,500 kg
LIFT CAPACITY	200/80 kg



Stowed travel size is 2.07 x 6.99 m (6' 9" x 22' 11")

- DIESEL POWERED**  
Perfect for external applications
- OUTDOOR RATED**  
Wind rated for outdoor use
- LEVELLING STABILISERS**  
Levels the machine for use on uneven ground
- SELF DRIVE**  
Can be driven on a standard licence
- IPAF 1b**  
Requires IPAF category 1b

The MultiTel MX235 truck mounted boom features a unique “Up and Over” geometry providing a good outreach at a high level with high payload. The compact chasis with its low centre of gravity makes the MX235 easy to drive and can be driven on a standard licence. The platform is quick and easy to set up and is perfect for multi-site roadside work or access in tight spaces.

## A range of extra's for 'Hire or Purchase' designed to give you the GTAdvantage™

- DOUBLE POINT HARNESSES TO KEEP YOU SAFE AT HEIGHT**
- OPERATORS AVAILABLE**  
Fully trained operator available for hire
- PROTECT SENSITIVE GROUND WITH 'GROUND GUARDS'**
- OPERATOR TRAINING FOR THIS ACCESS PLATFORM**
- SPREAD THE LOAD WITH THE RIGHT SIZE SPREADER PLATES**
- REMOVE THE RISK WITH GTA ALL RISK COVER**

Find out more about the 'GTAdvantage' extras at [gtaccess.co.uk](http://gtaccess.co.uk)

