

DIESEL SCISSOR LIFT

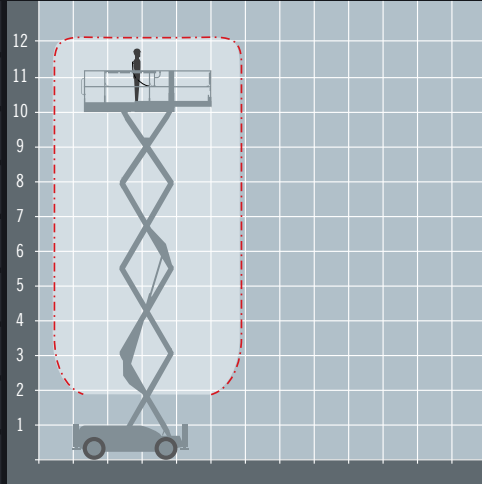
# HAULOTTE COMPACT 12DX

ALTERNATIVES: Skyjack SJ6832RT








## Rough terrain compact diesel scissor lift

REACH HEIGHT	12.06 m
PLATFORM HEIGHT	10.06 m
STOWED HEIGHT*	1.7 m
LENGTH	3.17 m
WIDTH	1.78
PLATFORM SIZE	2.45 x 1.45 m
EXTENDED SIZE	3.7 x 1.45 m
WEIGHT	4,110 kg
LIFT CAPACITY	450 kg



\*Stowed height shown is with the handrails folded.

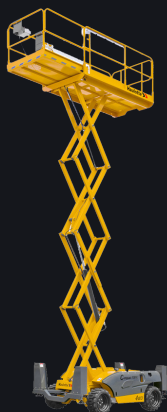
-  **DIESEL POWERED**  
Perfect for external applications
-  **OUTDOOR RATED**  
Wind rated for outdoor use
-  **ROUGH TERRAIN**  
4 wheel drive for uneven ground
-  **LEVELLING JACKS**  
Levels the machine for use on uneven ground
-  **IPAF 3a**  
Requires IPAF category 3a

The Haulotte Compact 12DX diesel scissor lift has 4 wheel drive and rough terrain tyres and is perfect for working on construction sites. Hydraulic outriggers keep the platform stable while the extending platform provides over 5.3 square metres of usable platform that can lift several operators and equipment with ease.

## A range of extra's for 'Hire or Purchase' designed to give you the GTAdvantage™

-  **GAIN ANOTHER PAIR OF HANDS WITH PLATFORM ACCESSORIES**
-  **PROTECT SENSITIVE GROUND WITH 'GROUND GUARDS'**
-  **PROTECT FINISHED SURFACES WITH WHEEL COVERS'**
-  **SPREAD THE LOAD WITH THE RIGHT SIZE SPREADER PLATES**
-  **REFUEL ON-SITE THE EASY WAY WITH A FUEL BOX!**
-  **REMOVE THE RISK WITH GTA ALL RISK COVER**

Find out more about the 'GTAdvantage' extras at [gtaccess.co.uk](http://gtaccess.co.uk)



[gtaccess.co.uk](http://gtaccess.co.uk)



THE POWER IN ACCESS™

HIRE | TRAINING | SALES | SERVICE 0 3 3 0 3 3 3 4 8 4 8

GTACOM12DX-2019/1